

University Hospital Neonatal Unit, Wishaw



50 Netherton Street, Wishaw, ML2 0DP



NICU Main Desk: 01698 366820
SCBU Main Desk: 01698 366243
Postnatal Ward: 01698 366220/221



We have a WIFI service throughout the hospital. The domain name is "Guest" and you simply need to click on the domain and then accept the terms and conditions of browsing



PARKING/TRANSPORT



The hospital is just off the A721 Glasgow Road on Netherton Street, Wishaw.

The main entrance is on Netherton Street and the visitor car park is in front of the main entrance. All parking facilities are free of charge. Disabled parking facilities are available.

Link for enlarged map below

[nhslanarkshire.scot.nhs.uk/download/wishaw-hospital-site-map/?wpdmdl=6641&ind=1579700481650](https://nhs.uk/urls/nhslanarkshire.scot.nhs.uk/download/wishaw-hospital-site-map/?wpdmdl=6641&ind=1579700481650)

University Hospital Wishaw Site Map

Key to main hospital buildings

Site Entrances

Level 0

- (A) Rear Entrance
- (B) Education & Training Centre
- (C) Mental Health Facilities

Level 1

- (A) A&E Entrance
- (B) Main Entrance
- (C) Rehabilitation Entrance
- (D) Elderly Day Unit Entrance
- (E) Maternity Unit Entrance



MPR.WGHMAP17_0416.L



ACCESSING THE NEONATAL UNIT



Both the Neonatal Intensive Care Unit (NICU) and the Special Care Baby Unit (SCBU) are secure areas for which there is a buzzer entry system. Parents will be able to gain entry to the unit using finger print recognition for the period of time their baby is being cared for in the unit.

Please ensure the door closes securely after you enter and don't let others enter the unit with you.

Both SCBU and NICU are located on the 2nd floor - there are lifts to the right just before the stairs and just after WHS Smiths.

The main entrance to the hospital is open all night long.

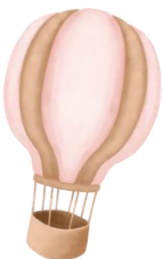


A TOUR OF OUR UNIT

We endeavour to give parents, who are expecting their baby to spend some time in our unit, a welcome tour in person if this is something they would like.

Additionally, we have an online video if this is something parents would prefer to look at

[NHS Lanarkshire - Neo Natal Walkthrough VO.mp4 on Vimeo.](#)



PARENT ACCOMMODATION



We have a family flat located in the hospital grounds which is available for parents that wish to stay. We will try and accommodate any parent who wishes to stay in the hospital whilst your baby is in our unit. In our SCBU, we have 4 transitional care rooms where parents can stay with their baby whilst having access to additional support.

If there is not space in the hospital for accommodating parents, we will sometimes use the Commercial Hotel in Wishaw (13 minute walk from the hospital).



FOOD OUTLETS



There is a sitting room and kitchen available for parents on the unit (no visitors allowed). This contains a microwave and facilities to make tea and coffee. There is also a section of sandwiches which should be available for parents. A fridge is available to store food and juice etc. Please date and label all items.

There is a restaurant located on level 0 and a coffee shop (serving Costa) at the main entrance on level 1. Next door to this there is a WHS Smiths. Of note - we do not allow food or juice into the rooms with babies.



TIME OUT



Greenhead Moss Nature Reserve

- Number 41 from WGH (8 minute bus journey followed by 8 minute walk)
RSPB Baron's Haugh
- Nature reserve with wetlands with the chance (albeit small!) to spot Kingfishers and Otters.
Main street
- Several coffee shops including The Terrace Café, Aroma Coffee & Kitchen, Food for Thought Café and Wellbeing Hub.
 - McDonalds
 - Strathclyde Country Park
 - 12 minute drive



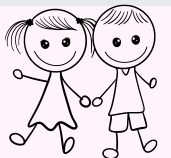
FAITH LEADERS

Reverend Deacon Henry McKenna 01698 366779 (07792913166 - 24hr)

The spiritual care department work closely with NICU to deliver an appropriate service for patients and families based on faith and no faith. This also includes supporting when other faith representatives are required. The hospital sanctuary is available on the 1st floor and is available for patients, parents and staff to have a moment of reflection.

Chaplaincy service is available 24/7. The sanctuary also has a new sensory area which can be used by siblings of our babies.

SIBLINGS



We are very lucky in that our onsite nursery is able to offer free sessions for brothers and sisters of babies in the neonatal unit. These are offered subject to availability but so far we have been able to offer a wide range of sessions.

If this is something that would help you with childcare and give you more time to spend with your baby, please speak to any member of staff and they will happily call the nursery and check what sessions are available.



PARENT SUPPORT



We have a Neonatal Psychology Service within our department and we encourage parents to engage with our team as we know this can help with what can often be a difficult journey.

Within the unit we have a FABB (Family and Baby Bonding) Group that is constantly looking at new ways to improve Family Integrated Care in our unit. So far we have introduced the following:

Family sessions

The aim of these sessions is to provide you with a variety of knowledge and skills to help you to be more involved in your baby's care. We have sessions led by midwives, nursing assistants, breast feeding support staff, pharmacists, dieticians, physiotherapists, speech and language therapists and we hope to add many more. We offer regular sessions regarding the importance of breast milk, baby massage and resuscitation.

Baby Library

We have numerous books available for you to borrow to read to your baby.

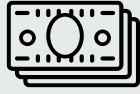
Bookbug

Volunteers come to sing and tell stories to the babies. All babies receive a bookbug bag with books to take home when they leave the unit.





FINANCES



Speak to one of our lovely ward clerkesses Abbi, Geraldine and Margaret who will be able to help you with filling out an expenses form (Young Patients Family Fund) which they will then process for you. You are able to claim up to £8.50 per parent and per sibling for a meal each day and one return journey to and from the hospital. The fund can also support the cost of accommodation.



VISITING



Our unit is open to parents at all times.

Other visitors are welcome from 1-3pm and 5pm-7pm - only one visitor and a parent is allowed at the cot at any one time, but visitors may swap over. Siblings are not included in this rule - they can be present with both the parent/visitor at any time. Additionally, grandparents can have one visit on the day of delivery if accompanied by a parent. (out with normal visiting times).

Due to the risk of infection, no children under the age of 16 are allowed to visit the unit unless they are siblings.

Visitors are asked to stay away if they are unwell. You are welcome to call the unit and check prior to your visit if you are unsure. During your time on the unit we request that you are bare below the elbows and on arrival to the unit you wash your hands - this is to reduce the risk of infection. We can provide you with lockers to place valuables e.g. watches, if you wish.



UNIT WEBSITE/USEFUL LINKS



<https://www.bliss.org.uk/>

<https://www.unicef.org.uk/babyfriendly/>

<https://www.perinatalnetwork.scot/>

<https://www.bapm.org/>

<https://www.mygov.scot/neonatal-expenses-fund/>

<https://www.bestbeginnings.org.uk/small-wonders>

<https://www.breastfeedingnetwork.org.uk/>

<https://twinstrust.org/>

<https://www.mygov.scot/best-start-grant-best-start-foods/>

<http://octopusforapreemie.com/>

<https://scottishcotdeathtrust.org/>

<https://www.lullabytrust.org.uk/>

<https://www.parentclub.scot/>

<https://www.mygov.scot/register-a-birth/>

<https://www.nhsinform.scot/newbornscreening>

<https://www.scottishbooktrust.com/bookbug>

<https://maternalmentalhealthscotland.org.uk/>

<https://www.simbacharity.org.uk/>

[St John's Ambulance - Baby CPR/ Newborn Resuscitation](#)

If there is anything else we can help with, please don't hesitate to ask

