

Royal Hospital for Children (RHC), Glasgow



Neonatal unit, level 1 and 2
1345 Govan Road, Glasgow G51 4TF



Level 1: 01412012339

Level 2: 0141 232 4335



Wi-Fi access
Password - NHS patient



PARKING/TRANSPORT



Parking is free. If you require, you will be given a parking permit as parking attendants are on duty in the car parks at certain times. Please ask staff for assistance with this.

Nearby parking - Maternity carpark, Multi-Storey RHC
[RHCG - Getting to the Royal Hospital for Children Glasgow](#)
[\(nhsggc.org.uk\)](#)

This video shows you how to find the neonatal unit:

Click [HERE](#)

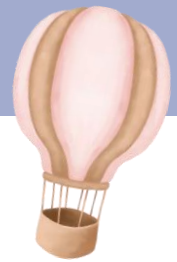




ACCESSING THE NEONATAL UNIT

The unit has a buzzer entry system and fingerprint access for parents.

Parents can access the neonatal unit at any time of day using our biometric fingerprint scanner. Our ward clerks can arrange this for you.



A TOUR OF OUR UNIT

A virtual tour of the unit can be accessed by clicking the link below:

[Virtual Tour of the Neonatal Unit at RHC](#)



PARENT ACCOMMODATION



For parents from outside the West of Scotland, we have access to some parent accommodation on site. If you feel you may need this, please speak to the nurse looking after your baby or the ward clerks and they will help you to arrange this.


Please click the links below for more information on parent accommodation.

Family rooms

[Ronald McDonald House Glasgow - Keeping Families Together](#)

[RHC Accommodation](#)

Prior to your baby going home, we may offer you the opportunity to stay with your baby in one of our four rooming in rooms on level 2 of the neonatal unit. This is normally reserved for babies within 48 hours of going home.



FOOD OUTLETS



WRVS Café - Maternity Hospital Main Entrance
Mon-Fri 9.00am -4.00pm, Sat-Sun 12.00pm-4.00pm

Aroma Coffee Bar - RHC Main Entrance
Mon-Fri 8:00am-4:00pm

M&S Simply Food - Adult Hospital (QEUH)
Mon-Fri 6:00am-9:00pm, Sat-Sun 6:30am- 7.30pm



WHSmith - Adult Hospital (QEUH)
Mon-Fri 7:00am-9:00pm, Sat-Sun 8:00am-8:00pm

Soup and Juice Co - Adult Hospital (QEUH)
7:00am-9:00pm daily

Campden Food Co - Adult Hospital (QEUH)
8:00am-8.00pm daily

Restaurant - level 1 Main Adult Hospital (QEUH)
7.30am -7.30pm daily

Aroma Night Café - Adult Hospital (QEUH)
10:00pm - 02:00am

Lidl Supermarket - Moss Road, Govan (Around the corner from Ronald McDonald House)



TIME OUT



There are lots of nearby places for some time out.

There are some benches and a playpark beside the multistorey car park next to the children's hospital.

Braehead shopping centre - around a 5 minute drive or 15 minute bus ride away. Here you will find an array of shops, restaurants and coffee shops.

Bellahouston park - around a 10 minute drive away or 25 minutes on the bus.

Wonderworld Soft play is a 10-minute drive away and an enjoyable day out for siblings

<https://www.wonderworldsoftplay.co.uk/uk/glasgow/>



SPIRITUAL CARE

The spiritual care team is here to support. They offer compassionate, person-centred care and this service is available to people of all backgrounds, faiths and belief groups and none. The sanctuary offers a place for peace and contemplation to sick children and their families. You might be looking for a quiet space, a place for reflection or for a time for prayer and you are very welcome to drop in and spend time here. The sanctuary can be found in the children's hospital just beyond clinic 5 on the group floor.

[RHCG - Spiritual Care \(nhsggc.org.uk\)](http://nhsggc.org.uk)

Please speak to our team if you need a quiet place to pray.



SIBLINGS



Siblings are welcome in the unit any time. We have Toys and crafts available and we are incredibly lucky to have our very own MediCinema in the hospital. The MediCinema is a full-size cinema within the hospital which shows all the current films. Parents and siblings can attend the Medicinema. Showing times can be found on their website at medicinema.org.uk

There is a children's club in the children's hospital located on level 0 passed the information desk on the right.



FINANCES



The Young Patients Family Fund (YPPF) is there to help families to be there for children in hospital. The Young Patients Family Fund will cover expenses for travel, food, and accommodation where necessary. The fund supports parents / carers and siblings visiting a baby in hospital.

At RHC there is a dedicated project team that can assist you with your application to the YPPF. The project team visit the unit on a Tuesday and Wednesday to meet with families.

We also have other family support services available at RHC. Ask our team for more info.

VISITING



Parents and siblings are welcome on the unit at any time, you are not visitors.

Other family members/visitors can visit from 12pm till 7.15pm with a parent. Only two people, including the parent can be at the cot side at any one time. Sorry but children that are not siblings are unable to visit.

You can contact the ward at any time for an update. While you are in the unit, you can use facetime etc. to make your families feel involved in meeting your baby.





PARENT SUPPORT & USEFUL LINKS

Having a premature or sick baby/babies can be very stressful and frightening for families for lots of different reasons. The staff caring for you and your baby will provide support on a day by day basis. There is also a range of different types of additional support for families. More information can be found [here](#).

The Maternity and Neonatal Psychological Interventions (MNPI) team are here to help you work through any worries and feelings you may be having. The team tries to meet with as many parents as they can as part of routine care. If you have not been given an appointment and think it would be helpful for you, please ask the team caring for your family to arrange one. You can also contact the team directly on 01412324333. The team is available Monday to Friday 09:00am-05:00pm.

The neonatal unit website can be [found HERE](#)

[Neonatal infant feeding information and support](#)

[Bliss Scotland | Bliss](#)

[Fathers Network Scotland - building a father-friendly world](#)

[Home - Amma Birth Companions](#)

[RHCG \(nhsggc.org.uk\)](#)

[Glasgow Childrens Hospital Charity](#)

[Scottish Perinatal Network - Information for Families](#)

[Bookbug - reading to your baby in the Neonatal Unit](#)

[The Twins Trust](#)

Facebook - Neonatal Unit RHC Glasgow

Instagram - HUG_RHC

X - @RHCGlasgow

