

Neonatal Unit, Ward 40

Ninewells Hospital, Dundee



Ninewells Hospital, James Arrott Drive, Dundee, DD2 1UB



Direct: 01382 633840

Switchboard: 01382 660111



Patient/Visitor Wi-Fi is available throughout the hospital. This is free to access and does not require any log-in information.



PARKING/TRANSPORT



Ninewells Hospital has a bus depot directly outside the main entrance. There is a bus link from the hospital to most points across the city and surrounding areas.

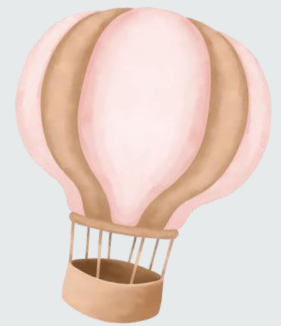
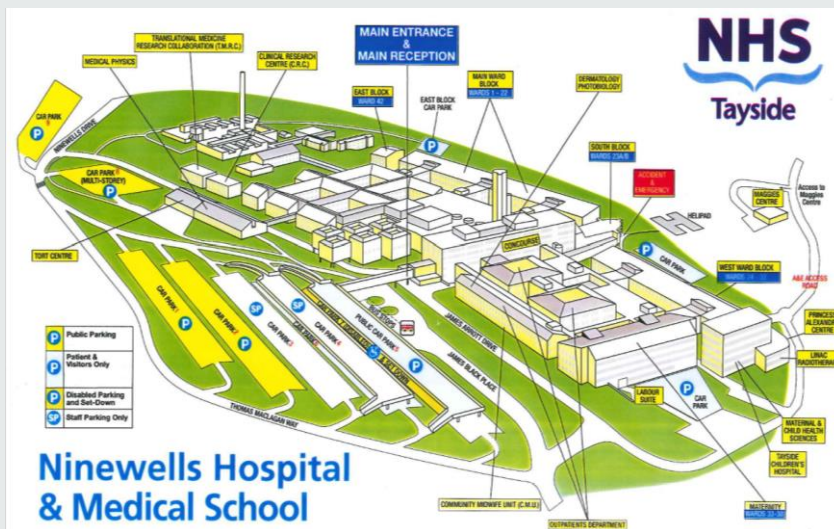
There is a taxi rank to the left when walking out of Ninewells Hospital that can be accessed day and night.



- Car parking is free at Ninewells Hospital
- All vehicles using short stay car parks, including blue badge holders, must clearly display a free 'collect and display' parking ticket.
- Car parks 5 and 6 are for patients and visitors only and have a four-hour time limit.
- Short stay car parks at A&E, Renal Dialysis Unit and East Block are for patients only.
- Car parks 1, 2, 9 and the multi-storey are for patients, visitors and staff.
- There is designated motor cycle parking located on level 1 of the multi storey car park.



- Disabled parking bays can be found close to the entrance to the hospital beside the drop-off and pick-up areas in car park 7.
- Car park 7 is a short stay car park dedicated for disabled patients and visitors.
- When using car park 7 you must remember to pick up a free 'collect and display' ticket and ensure that it is clearly displayed in your vehicle.
- Long stay disabled parking is available in car park 8A (beside the multi-storey car park).
- Parent and child parking:
- There are limited spaces at the far end of car park 7 for parent and child parking.
- All vehicles must clearly display a free 'collect and display' parking ticket.
- Electric vehicle charging points:
- There are public electric vehicle charging points located at the far end of car park 6.



ACCESSING THE NEONATAL UNIT

Head to the main entrance to the hospital and follow the signs for Ward 40. You come in on level 7 and the Neonatal Unit is located on level 6. It is very well sign posted. This is the same at all hours day and night.

Parents/carers will be given a swipe pass which enables access 24/7. Speak to the nurse caring for your baby if this has not been supplied on admission.

A TOUR OF OUR UNIT

You can view a virtual tour of the unit here:
[Neonatal Unit, Ninewells \(matterport.com\)](https://matterport.com)



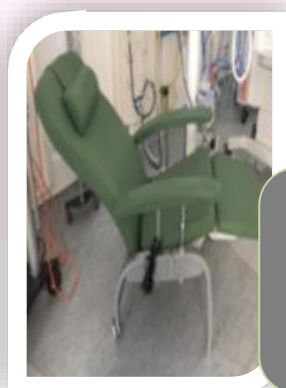
PARENT ACCOMMODATION



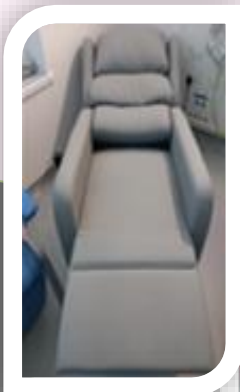
We have limited accommodation available in the Poppi Suite for parents. This is an area of eight rooms (shared with the paediatric ward), which have twin beds and ensuite toilet/shower facilities. There is also a communal sitting, dining and kitchen area for parents to use. We do our best to accommodate families who wish both parents to stay, however during busy periods this is not always possible and we may ask that mums share a twin room to allow us to meet the demand for beds.

Additionally we do allow 1 parent to sleep by the bedside if they wish.

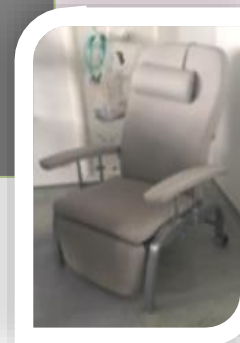
Speak to the nurse caring for your baby to arrange these.



LIE BACK CHAIRS ARE PROVIDED IN TAY AND EARN FOR THIS PURPOSE.



CONVERTIBLE CHAIRS ARE PROVIDED IN ESK FOR THIS PURPOSE.



FOOD OUTLETS



There is a parents room within the unit with a hot/cold tap, fridge and microwave for you to use to prepare/store meals and hot drinks.

In the parents room there is also a supply of tea, coffee, juice, condiments and snacks. You will be given a re-useable water bottle to use.

Within the main concourse of the hospital you can find:

WHSmith with sandwich and snack options.

Opening hours Mon-Fri 6.30am - 9pm, Sat-Sun 9am-8pm

A coffee shop that has hot rolls, cold rolls and baked goods.

Opening hours Mon-Fri 11.30am - 5.30pm, closed on weekends

A small shop selling hot food, sandwiches and snacks.

Opening hours Mon-Fri 11.30am - 5.30pm, closed on weekends



TIME OUT



On the unit we have two quiet rooms that can be utilised for 'time-out' or to relax in.

The Ninewells garden can be found directly behind the hospital and includes a short woodland walk.



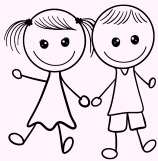
FAITH LEADERS

There is a Chaplin service available 24/7, speak to your babies nurse to organise this.

You are also welcome to bring your own faith leader to the unit.

If you would like to have blessings, naming ceremonies etc, speak with your babies nurse and we will do our best to accommodate this for your family.

SIBLINGS



Each sibling is gifted one 'sibling pack' which contains some items to keep them entertained whilst on the unit e.g books, colouring books or puzzle books.

Radio Lollipop volunteers attend the unit every Tuesday at 6pm and offer time out for siblings and take them to play board games or do some arts and crafts.





PARENT SUPPORT

We have two chaplains who work particularly with the Neonatal Unit and will offer support during your stay.

We have a family support worker from Parent to Parent who visits regularly. Our psychology team do a 'ward round' once a week.

Referrals to our psychology team can be made at any time, speak to any of our nurses or medical staff to organise this.

Every Thursday 1pm-2pm our family support working and psychology team host a 'Neobuddies NICU' hour in the unit seminar room for all parents to attend.

Following discharge our family support work hosts a 'Neobuddies Stay & Play' group the first Wednesday of the month 3.30pm-5pm.

FINANCES



If you are the parent or guardian of a premature or sick newborn baby in a neonatal unit you can claim for the costs of travel, food and accommodation.

Claims can be made from the day of admission however you must claim from the Young Patients Family expenses fund within 3 months of your baby being discharged from hospital.

Claim forms are available within the unit. Please ask the nurse looking after your baby for an expenses form.

These forms must be signed by the charge nurse prior to taking them to the cashiers' office on Level 8, Ninewells Hospital.

In extenuating circumstances The Archie Foundation may be able to provide further support, speak to the nurse caring for your baby if you feel you require this.





VISITING



Parents/carers are welcome at all times. We want you to care for your baby throughout your stay in the unit. As parents you are not visitors, we see you as part of the team! The unit staff are here to help you.

Brothers and sisters of your baby are welcome to visit with you. Other children must be 12 years+ to visit. (children must be supervised at all times).

Grandparents or another nominated person/s are welcome to be present without you if you give your consent.

All other visitors are welcome to visit throughout the day.
Maximum 3 adults at any time.

In some circumstances - when the unit is busy or babies are being admitted - you may be asked to reduce to a total of two at the cotside. We would appreciate your understanding and support throughout such times.

Please remove all outside jackets/coats and leave them in the cloakroom at the entrance to the unit.

Please ensure you and your friends/family wash your hands on entering and when leaving the unit.





WHO'S WHO ON OUR UNIT?

Medical staff on the Neonatal Unit will be wearing scrubs. They may sometimes be wearing their own clothes, but they will always be wearing a lanyard to state who they are. Doctors, Advanced Neonatal Practitioners (ANNPs), junior doctors and medical students all wear the same or a similar uniform.

- Nurses wear ocean blue
- Senior Nurses wear navy blue
- Nurse Managers wear maroon
- Health care assistants wear light blue
- Allied health professional (e.g. physiotherapist) wear turquoise
- Domestics wear green



Here are a few examples:



UNIT WEBSITE/USEFUL LINKS



[NHS Tayside \(scot.nhs.uk\)](https://www.scot.nhs.uk) (Main Website)

[@NICUNinewells](#) (Twitter)

[@NICUNinewells](#) (Facebook)

If there is anything else we can help with, please don't hesitate to ask

