

# Victoria Hospital Neonatal Unit, Kirkcaldy



Neonatal Unit Victoria Hospital Kirkcaldy  
NHS Fife, Neonatal Unit, Phase 3, Level 1, Victoria Hospital, Kirkcaldy,  
KY2 5AH



Neonatal Unit: 01592 729192  
Main hospital number: 01592 643355  
We encourage parents to telephone at any time for an update on their baby's progress. Please do not hesitate to ask if you wish to know anything about your baby's care.



There is Wi-Fi available, no password and unlimited access.



## PARKING/TRANSPORT



Free parking is available on site.

There are several carparks around the hospital - you can find lots of information on different ways to travel to the hospital at this link:

[Victoria Hospital | NHS Fife.](#)

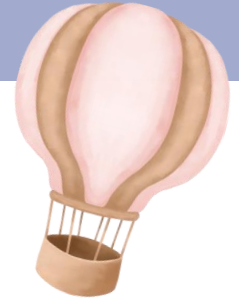
Here is a map of the parking locations [Car parking at Victoria Hospital | NHS Fife.](#)

The closest carparks are A and B. The neonatal unit is located on Level 1 in Phase 3 building and can most easily be accessed through Entrance 2 (Maternity and Children's Unit) on this map [victoria-hospital-map.pdf \(nhsfife.org\).](#)

At night, you will need to press the buzzer to gain access to the building.

# ACCESSING THE NEONATAL UNIT

We have a secure entry system in place; please press the buzzer at the door to the Neonatal Unit.



## A TOUR OF OUR UNIT

[A tour can be accessed via the link below;](#)

[Neonatal Unit Virtual Tour | NHS Fife](#)

Our unit video tour above highlights the most important areas within the neonatal unit.



## PARENT ACCOMMODATION



We have some accommodation available for parents. There are two family rooms on the unit which can accommodate two adults each and in certain situations, when your baby is ready, you will be able to look after your baby in your room (*rooming in*).

Within the Neonatal Unit, we have lockers for parent use. There is also a parents' lounge with a fridge, microwave, and kettle. The parents' lounge also has toilet and shower facilities.



## FOOD OUTLETS



You can purchase food and drink at Costa Coffee, WHS Smith, and 'Grab and Go' located at the main entrance. A Co-op supermarket is a 5 minutes' walk next to the hospital and further food options are available in Kirkcaldy city centre.

## TIME OUT



If you want to spend some time away from the Neonatal Unit, Ravenscraig Park, Beveridge Park, and Kirkcaldy Promenade are all a short drive away.

## FAITH LEADERS



The department of spiritual care is available to offer care and support for families.

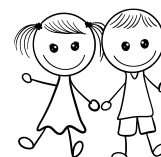
Spiritual and Pastoral support is available at any time from the hospital Chaplains. Team members will listen and respect your thoughts and experience, whatever your background and beliefs. They can support a blessing of baptism if this is appropriate to your wishes.

If you wish to meet the chaplain, please speak to a member of staff to arrange, or you can contact the chaplain's office directly on 01592 648158.

## SIBLINGS

Siblings are welcome on the neonatal unit. There are no restrictions on the time they can visit.

Siblings will be provided with sibling packs to help them understand what is going on.





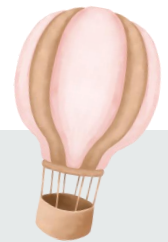
## PARENT SUPPORT

In addition to the psychology team present during ward rounds, the Victoria Hospital has a chaplaincy service. This service can offer support to families of all faiths and those with no particular faith.

## STAFF UNIFORM IDENTIFIER

You'll meet lots of people during your neonatal stay and it can be daunting to remember who is who. Please know you can always ask and we have created a short video to let you know who our team members are.

<https://youtu.be/emKSvi26GRc>



## FINANCES



Having a baby in the neonatal unit can bring extra expenses and you can get help with travel costs, meals and accommodation with the young person's family fund (YFFF).

You can pick up a claim form from the staff in the unit. Claims can be submitted incrementally during an ongoing hospital stay, such as weekly or in full for the entire stay, up to three months, following discharge. You need to get the form signed by staff in the unit before taking it to the cash office in the hospital. You may need to submit receipts for petrol or travel costs with your form.

## VISITING

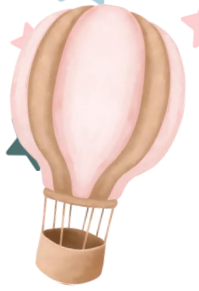


Parents and siblings can access the unit at any time.

Visiting for others is from 2pm to 8pm. This is restricted to 2 extra people/day, with a maximum of 3 by the cot side at any one time.



## UNIT WEBSITE/USEFUL LINKS



[For babies born premature or sick | Bliss](#)

[The Breastfeeding Network | Independent Breastfeeding Support](#)

[Home - Safe Sleep Scotland](#)

[For the Public - ScotSTAR Scottish Neonatal Transport Service](#)

[First Steps Nutrition Trust](#)

[Benefits - mygov.scot](#)

[Information for your Situation | Turn2us](#)

If there is anything else we can help with, please don't hesitate to ask

