

# PCCU and NNU, Royal Hospital for Children and Young People



Royal Hospital for Children and Young People,  
50 Little France Crescent,  
Edinburgh, EH16 4TJ



Each bed-space on PCCU has their own phone number which parents have access to as soon as your baby is admitted; this will help you speak directly to your child's nurse without needing to be transferred to the appropriate area. Just ask your nurse for this number on admission.

Main Hospital Number: 0131 536 1000  
Pod 1 lead: 0131 312 1131  
Pod 2 lead: 0131 312 1132  
Pod 3 lead: 0131 312 1133



There is Wi-Fi available for all families to access for free.  
Speak to a member of staff for a password.

## PARKING/TRANSPORT



We offer free parking for parents. Proximity parking is available outside the hospital entrance and visitor parking across the street in Car Park 1B.

Below is a link for travel within the hospital and parking

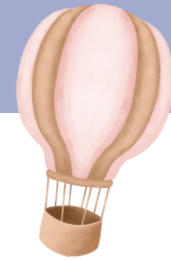
[Travel & Transport - Royal Hospital for Children and Young People \(nhslothian.scot\)](https://nhslothian.scot)



# ACCESSING THE NEONATAL UNIT

Access to PCCU is restricted with a buzzer system. Each buzzer system is connected to the bed-space/pod that your child is resident in. You may be asked questions to identify yourself prior to entry into PCCU.

There are multiple lifts available throughout the hospital depending on how you enter the hospital, which are appropriate for wheelchair/pram access.



# A TOUR OF OUR UNIT

A tour of PCCU will be facilitated on arrival to the PCCU/NNU. Unfortunately there is no available online tour of the PCCU/NNU specifically but below is a link to an interactive tour of RHCYP.

[Interactive Map - Royal Hospital for Children and Young People \(nhslothian.scot\)](https://nhslothian.scot)

Facilities on the unit include:

- Visitors toilet
- Visitors sitting room
- Expressing room
- Waiting areas



# PARENT ACCOMMODATION

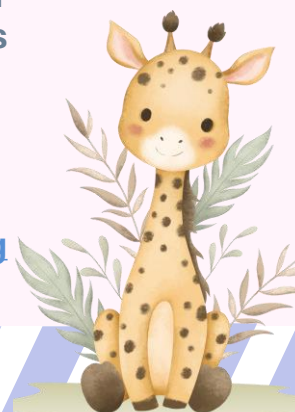


On PCCU, due to the amount of equipment and space needed around each bed-space there are no facilities for parents to sleep next to their baby. PCCU does have limited emergency accommodation in overnight family rooms.

Ronald McDonald House prioritises PCCU families for a room in their facility which includes ensuite rooms, communal kitchens, sitting rooms and other facilities.

All accommodation facilities can be viewed through the link below.

[Accommodation for families - Royal Hospital for Children and Young People \(nhslothian.scot\)](https://nhslothian.scot)



## FOOD OUTLETS



In RHCYP there is access to food and drink in multiple areas; the Edinburgh Children's Hospital Charity shop, vending machines and a restaurant on the fourth floor.

Follow the link below to see all amenities:

[Patient & Visitor Facilities - Royal Hospital for Children and Young People \(nhslothian.scot\)](https://www.nhs.uk/visiting/patient-and-visitor-facilities-royal-hospital-for-children-and-young-people)

There are also further amenities located in Royal Infirmary Edinburgh, on the same campus a short walk away. This includes M&S, WHSmith and a Restaurant.

## TIME OUT



Walks and cycles are available on RIE campus - see link below:

[Little France | Edinburgh Innertube Map : Edinburgh Innertube Map](#)

Outside of the campus there are two nearby shopping areas easily accessible by public transport or walking/cycling

Cameron Toll - [Shops at Cameron Toll Shopping Centre, Edinburgh](#)

Fort Kinnaird - [Fort Kinnaird Shopping in Edinburgh | Shops, Restaurants & Cinema](#)

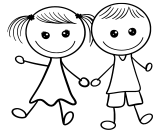
## FAITH LEADERS

Spiritual care and The Sanctuary are available in the hospital - see link below. A chaplaincy service is also available; speak to a member of staff to access this service.

[Spiritual Care - Royal Hospital for Children and Young People \(nhslothian.scot\)](https://www.nhs.uk/visiting/spiritual-care-royal-hospital-for-children-and-young-people)



# SIBLINGS



The Hub - available on the Ground floor of RHCYP, located by the Outpatient Department.

A range of facilities are based here including:

- Arts Programme
- Complimentary therapies
- Youth workers
- Play therapists

[Charity support for children & families - Royal Hospital for Children and Young People \(nhslothian.scot\)](https://www.nhs.uk/charity/children-and-young-people)

[Play - Royal Hospital for Children and Young People \(nhslothian.scot\)](https://www.nhs.uk/charity/children-and-young-people)

Edinburgh Children's Hospital Charity also runs from The Hub and provide many different supports that can be seen on their website below

[Edinburgh Children's Hospital Charity | Children's Charity \(echcharity.org\)](https://www.echcharity.org)

# PARENT SUPPORT



Family room - Open 24/7 Located on the third floor

Family support - available through The Hub

Social work - [Social Work - Royal Hospital for Children and Young People \(nhslothian.scot\)](https://www.nhs.uk/charity/children-and-young-people)

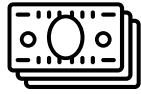
Support groups - [Support and further information - Royal Hospital for Children and Young People \(nhslothian.scot\)](https://www.nhs.uk/charity/children-and-young-people)

Children with learning disabilities - [Children with learning disabilities - Royal Hospital for Children and Young People \(nhslothian.scot\)](https://www.nhs.uk/charity/children-and-young-people)

Bliss for babies born premature or sick - [For babies born premature or sick | Bliss](https://www.nhs.uk/charity/children-and-young-people)



## FINANCES

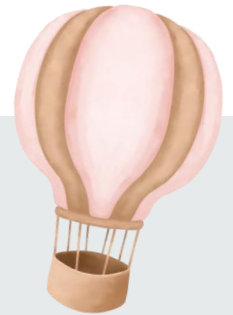


Within NHS Scotland there is financial support (non means based) for all families with a child in hospital. Having a baby in the neonatal unit can bring extra expenses and you can get help with travel costs, meals and accommodation with the young person's family fund (YFFF). Please ask a member of staff for more information on this.

Further Financial support is available through our CHAI Welfare Advisor, Kirsty Robertson who supplies a free service offering impartial support and advice to people regarding their income, welfare rights, debt and employment.

Links to both supports are available below :

[Financial Help & Advice - Royal Hospital for Children and Young People \(nhslothian.scot\)](https://www.nhs.uk/healthcare-associates/financial-help-and-advice-royal-hospital-for-children-and-young-people)



## VISITING



Parents are not visitors and have 24/7 access to PCCU.

We want parents to feel like part of the team and will encourage you to be involved as much as possible. All staff are here to help and support you as a family.

Siblings over the age of 5 are able to visit but must be accompanied by an adult and remain at their family bed-space. Visiting for siblings under the age of 5 may be restricted during peak viral season/outbreaks and it is at the Senior Charge Nurse on duty discretion regarding access during these periods.

Visiting on the unit is restricted to 2 persons per bedside at any time.

There is a maximum of SIX named visitors (which includes parents) per patient allowed in PCCU. This is for the health and safety of each patient to reduce the number of visitors into PCCU.





## WHO'S WHO ON OUR UNIT?

There are many teams working in and visiting the PCCU. It can be hard to remember who everyone is. Below is a uniform descriptor which may help identify staff:

**Consultants: Purple Scrubs**

**Medical staff: Blue/Green/Own scrubs**

**Advanced Nurse Practitioners (ANP): Navy tunic with red trim**

**Senior Charge Nurse: Navy tunic with light blue trim**

**Deputy Charge nurse/Staff Nurse: Blue tunic**

**Health Care Support Worker: Light blue tunic**

**Allied Health Professional (Dieticians, Physiotherapists, Speech and Language therapists, Occupational therapists): Bright blue/Mediterranean blue tunic**

**Pharmacy: Navy scrub**

**Student nurse: Gray tunic**

**Domestic: Green tunic**







## UNIT WEBSITE/USEFUL LINKS



[Wellbeing & further support - Royal Hospital for Children and Young People \(nhslothian.scot\)](https://www.nhs.uk/children-and-young-people/royal-hospital-for-children-and-young-people/)

[Training Videos - Royal Hospital for Children and Young People \(nhslothian.scot\)](https://www.nhs.uk/children-and-young-people/royal-hospital-for-children-and-young-people/training-videos/)

If there is anything else we can help with, please don't hesitate to ask

